

DUBAI CREEK
HARBOUR
THE COVE

AS
REAL ESTATE
STAY AHEAD, INVEST SMART

db
DUBRICKS
POSSIBILITIES ARE LIMITLESS

DUBAI CREEK HARBOUR



YOUR RESORT HOME
IN A WORLD CLASS CITY



A THRIVING
WATERFRONT
COMMUNITY





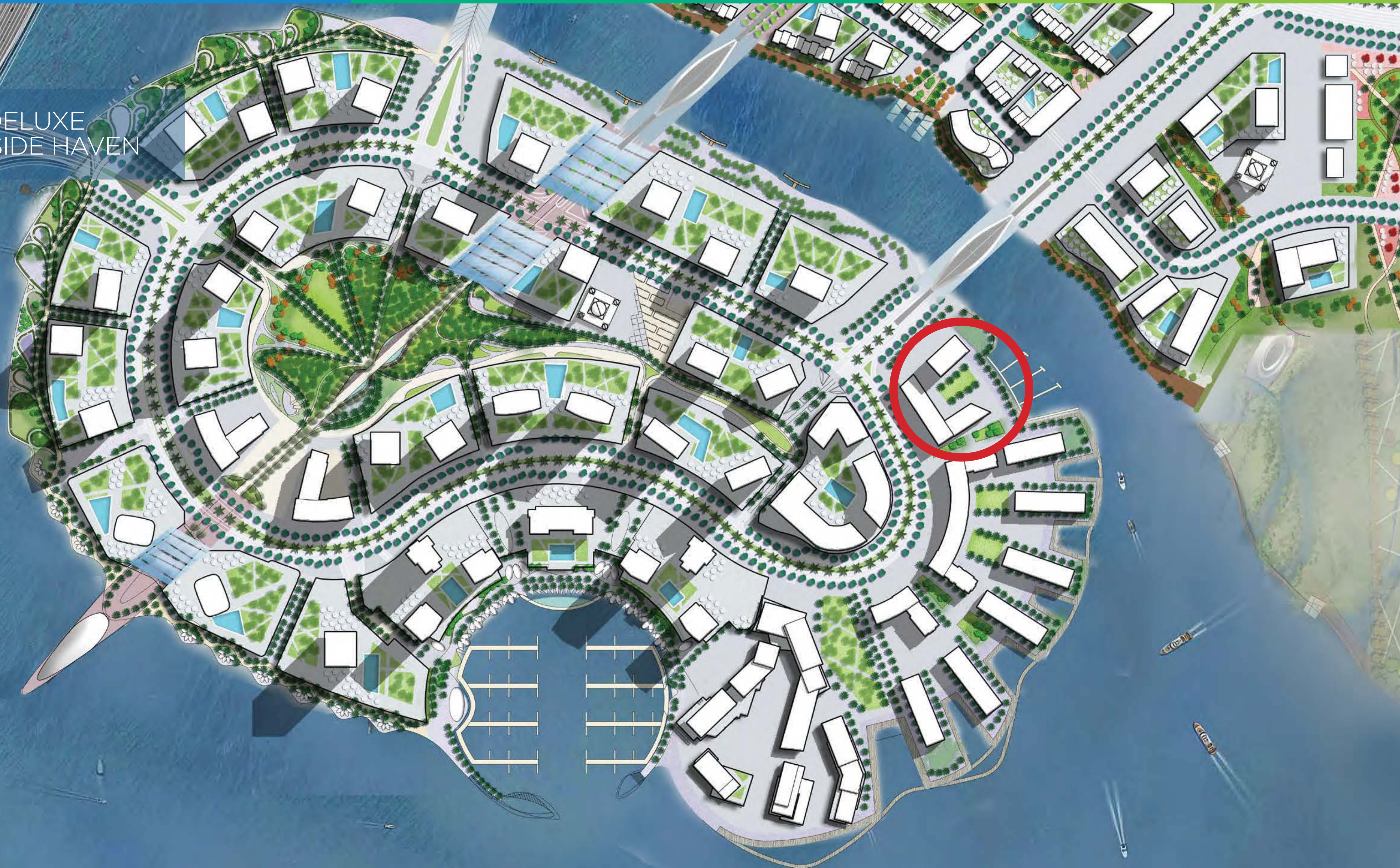
SUPREME STYLE
AND SERENITY



DAZZLING DUBAI
SKYLINE



A DELUXE
CREEKSIDE HAVEN





LUSCIOUS
LIVING SPACES







RELAX AND PLAY,
EVERY DAY



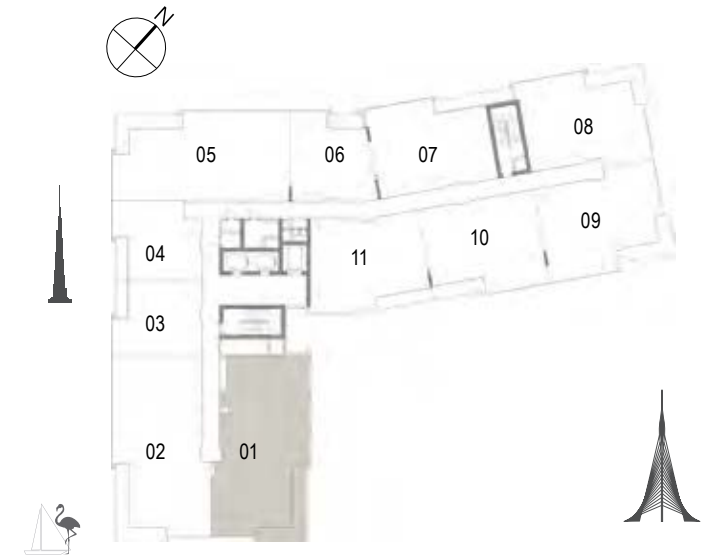


FLOOR PLANS

BUILDING 2

DUBAI CREEK
HARBOUR
THE COVE

Building 02
3 BEDROOM
UNIT 01/ LEVELS 02-06



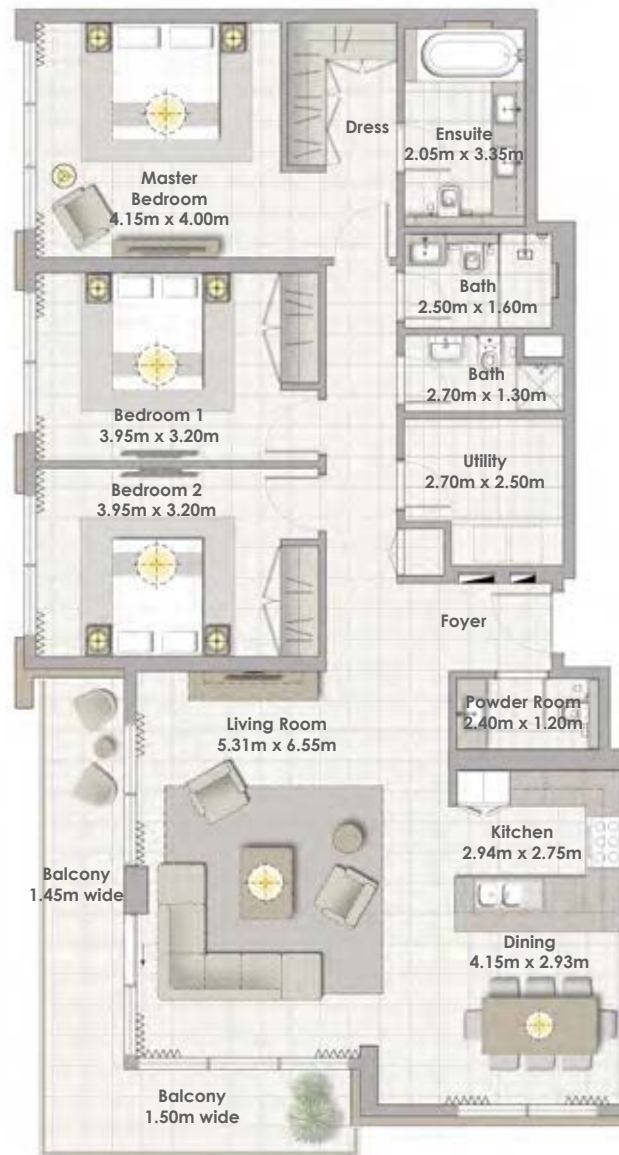
Suite Area	157.80 Sqm. / 1698.55 Sqft.
Balcony Area	18.31 Sqm. / 197.09 Sqft.
Total Area	176.11 Sqm. / 1895.63 Sqft.



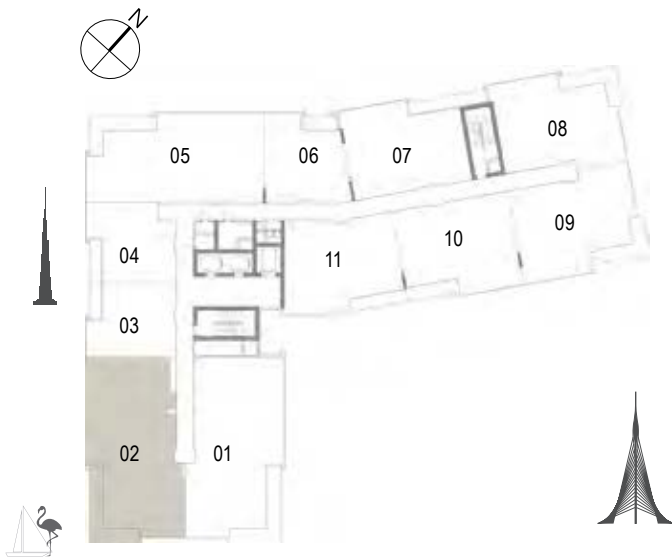
1. All dimensions are in imperial and metric, and measured to structural elements and exclude wall finishes and construction tolerances. 2. All materials, dimensions, and drawings are approximate only. 3. Information is subject to change without notice, at developer's absolute discretion. 4. Actual area may vary from the stated area. 5. Drawings not to scale. 6. All images used are for illustrative purposes only and do not represent the actual size, features, specifications, fittings, and furnishings. 7. The developer reserves the right to make revisions/alterations, at its absolute discretion, without any liability whatsoever.

DUBAI CREEK
HARBOUR
THE COVE

Building 02
3 BEDROOM
UNIT 02/ LEVELS 02-06



Suite Area	157.80 Sqm. / 1698.55 Sqft.
Balcony Area	18.31 Sqm. / 197.09 Sqft.
Total Area	176.11 Sqm. / 1895.63 Sqft.



1. All dimensions are in imperial and metric, and measured to structural elements and exclude wall finishes and construction tolerances. 2. All materials, dimensions, and drawings are approximate only. 3. Information is subject to change without notice, at developer's absolute discretion. 4. Actual area may vary from the stated area. 5. Drawings not to scale. 6. All images used are for illustrative purposes only and do not represent the actual size, features, specifications, fittings, and furnishings. 7. The developer reserves the right to make revisions/alterations, at its absolute discretion, without any liability whatsoever.



DUBAI CREEK
HARBOUR
THE COVE

Building 02
1 BEDROOM
UNIT 03/ LEVELS 01-06

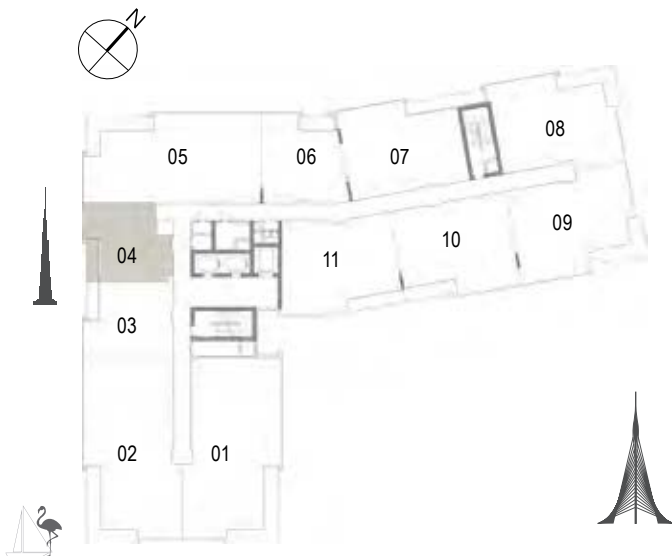


Suite Area	62.16 Sqm. / 669.08 Sqft.
Balcony Area	6.38 Sqm. / 68.67 Sqft.
Total Area	68.54 Sqm. / 737.76 Sqft.



1. All dimensions are in imperial and metric, and measured to structural elements and exclude wall finishes and construction tolerances. 2. All materials, dimensions, and drawings are approximate only. 3. Information is subject to change without notice, at developer's absolute discretion. 4. Actual area may vary from the stated area. 5. Drawings not to scale. 6. All images used are for illustrative purposes only and do not represent the actual size, features, specifications, fittings, and furnishings. 7. The developer reserves the right to make revisions/alterations, at its absolute discretion, without any liability whatsoever.

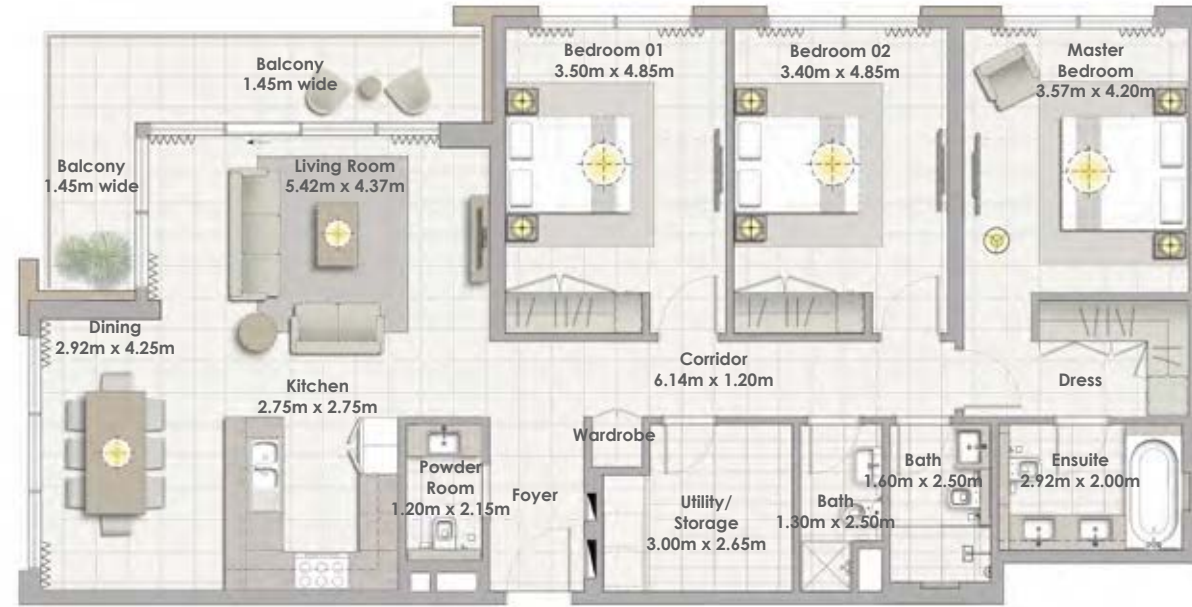
Building 02
1 BEDROOM
UNIT 04/ LEVELS 01-06



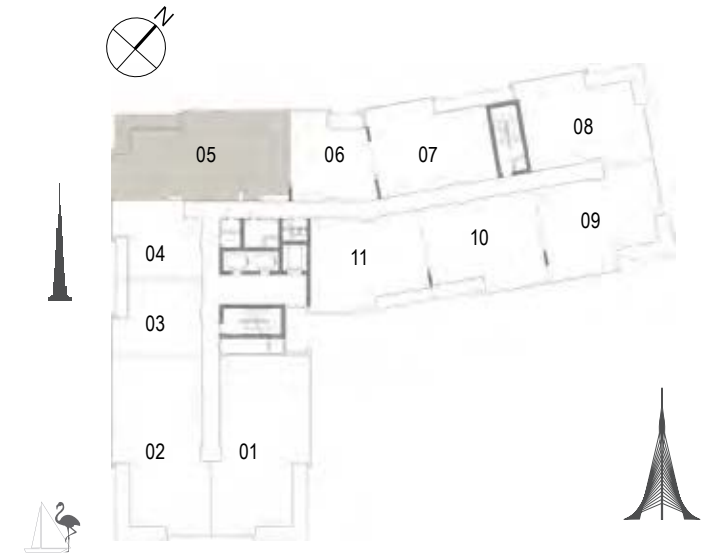
Suite Area	60.44 Sqm. / 650.57 Sqft.
Balcony Area	7.02 Sqm. / 75.56 Sqft.
Total Area	67.46 Sqm. / 726.13 Sqft.

DUBAI CREEK
HARBOUR
THE COVE

Building 02
3 BEDROOM
UNIT 05/ LEVELS 01-06

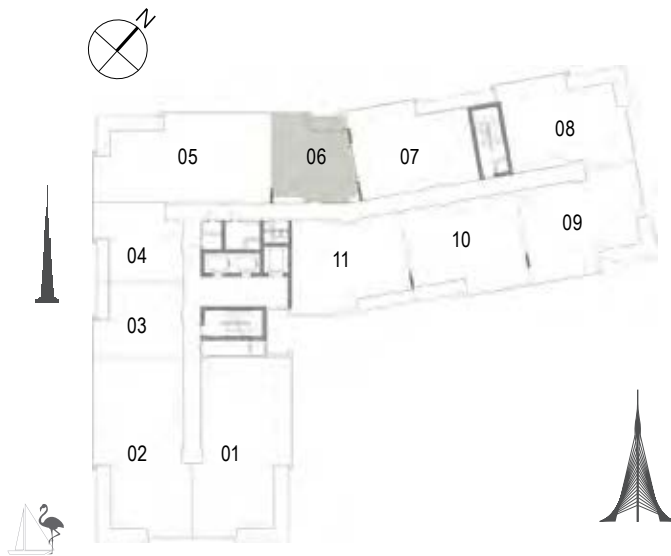


Suite Area	148.24 Sqm. / 1595.64 Sqft.
Balcony Area	14.78 Sqm. / 159.09 Sqft.
Total Area	163.02 Sqm. / 1754.73 Sqft.



1. All dimensions are in imperial and metric, and measured to structural elements and exclude wall finishes and construction tolerances. 2. All materials, dimensions, and drawings are approximate only. 3. Information is subject to change without notice, at developer's absolute discretion. 4. Actual area may vary from the stated area. 5. Drawings not to scale. 6. All images used are for illustrative purposes only and do not represent the actual size, features, specifications, fittings, and furnishings. 7. The developer reserves the right to make revisions/alterations, at its absolute discretion, without any liability whatsoever.

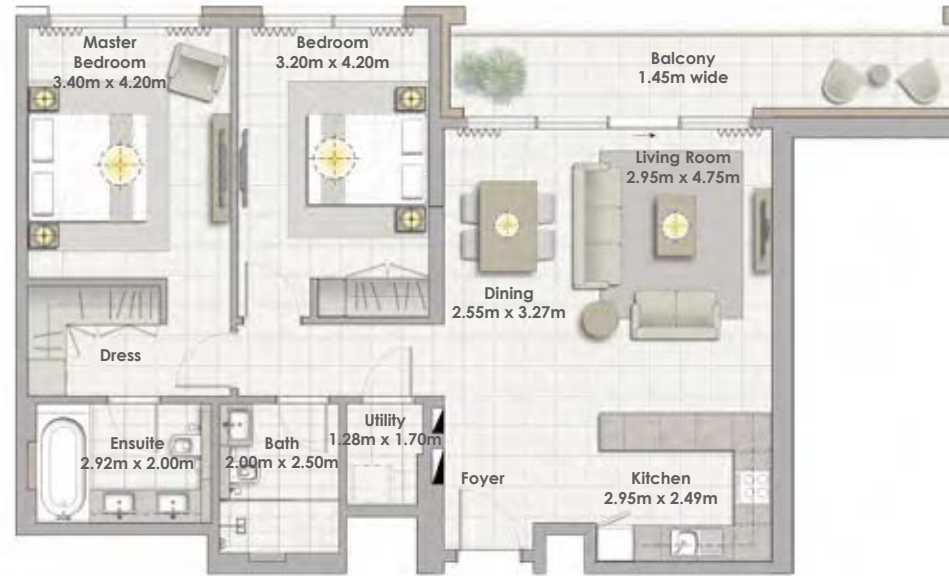
Building 02
1 BEDROOM
UNIT 06/ LEVELS 01-06



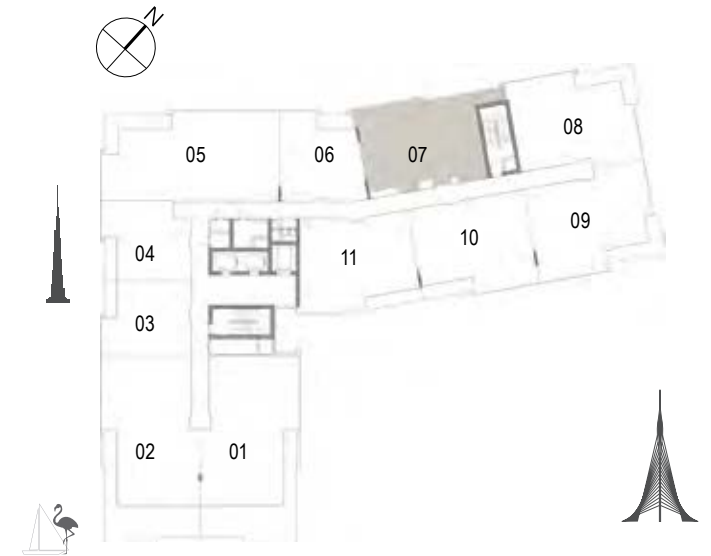
Suite Area	67.15 Sqm. / 722.80 Sqft.
Balcony Area	6.45 Sqm. / 69.43 Sqft.
Total Area	73.60 Sqm. / 792.22 Sqft.

DUBAI CREEK
HARBOUR
THE COVE

Building 02
2 BEDROOM
UNIT 07/ LEVELS 01-06



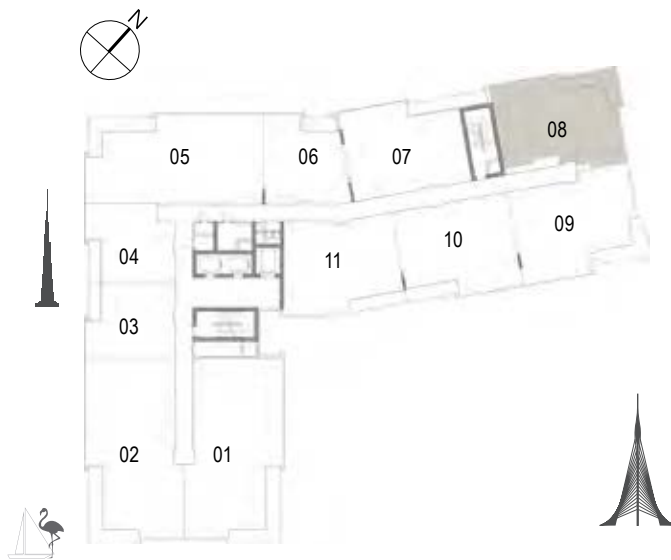
Suite Area	102.58 Sqm. / 1104.16 Sqft.
Balcony Area	13.60 Sqm. / 146.39 Sqft.
Total Area	116.18 Sqm. / 1250.55 Sqft.



1. All dimensions are in imperial and metric, and measured to structural elements and exclude wall finishes and construction tolerances. 2. All materials, dimensions, and drawings are approximate only. 3. Information is subject to change without notice, at developer's absolute discretion. 4. Actual area may vary from the stated area. 5. Drawings not to scale. 6. All images used are for illustrative purposes only and do not represent the actual size, features, specifications, fittings, and furnishings. 7. The developer reserves the right to make revisions/alterations, at its absolute discretion, without any liability whatsoever.

DUBAI CREEK
HARBOUR
THE COVE

Building 02
2 BEDROOM
UNIT 08/ LEVELS 01-06



Suite Area	103.43 Sqm. / 1113.31 Sqft.
Balcony Area	13.61 Sqm. / 146.50 Sqft.
Total Area	117.04 Sqm. / 1259.81 Sqft.

1. All dimensions are in imperial and metric, and measured to structural elements and exclude wall finishes and construction tolerances. 2. All materials, dimensions, and drawings are approximate only. 3. Information is subject to change without notice, at developer's absolute discretion. 4. Actual area may vary from the stated area. 5. Drawings not to scale. 6. All images used are for illustrative purposes only and do not represent the actual size, features, specifications, fittings, and furnishings. 7. The developer reserves the right to make revisions/alterations, at its absolute discretion, without any liability whatsoever.

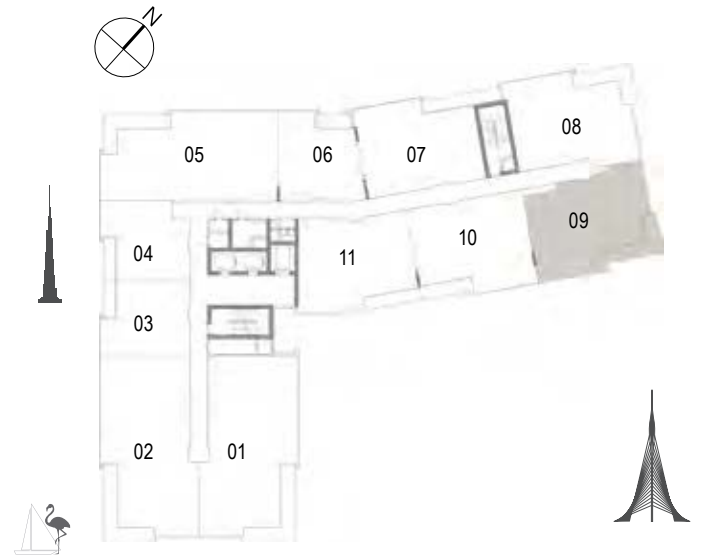


DUBAI CREEK
HARBOUR
THE COVE

Building 02
2 BEDROOM
UNIT 09/ LEVELS 01-06

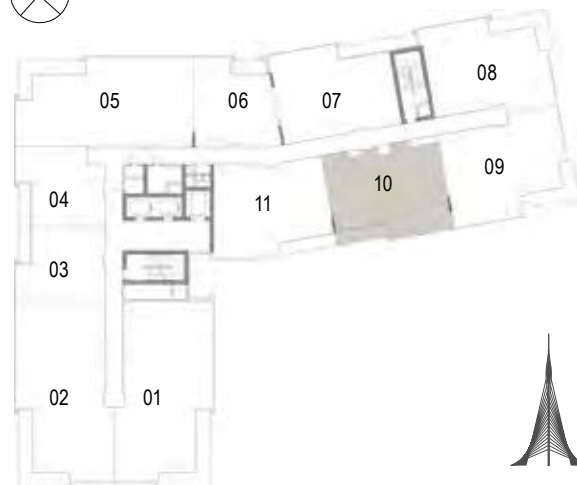


Suite Area	108.25 Sqm. / 1165.19 Sqft.
Balcony Area	13.62 Sqm. / 146.60 Sqft.
Total Area	121.87 Sqm. / 1311.80 Sqft.



1. All dimensions are in imperial and metric, and measured to structural elements and exclude wall finishes and construction tolerances. 2. All materials, dimensions, and drawings are approximate only. 3. Information is subject to change without notice, at developer's absolute discretion. 4. Actual area may vary from the stated area. 5. Drawings not to scale. 6. All images used are for illustrative purposes only and do not represent the actual size, features, specifications, fittings, and furnishings. 7. The developer reserves the right to make revisions/alterations, at its absolute discretion, without any liability whatsoever.

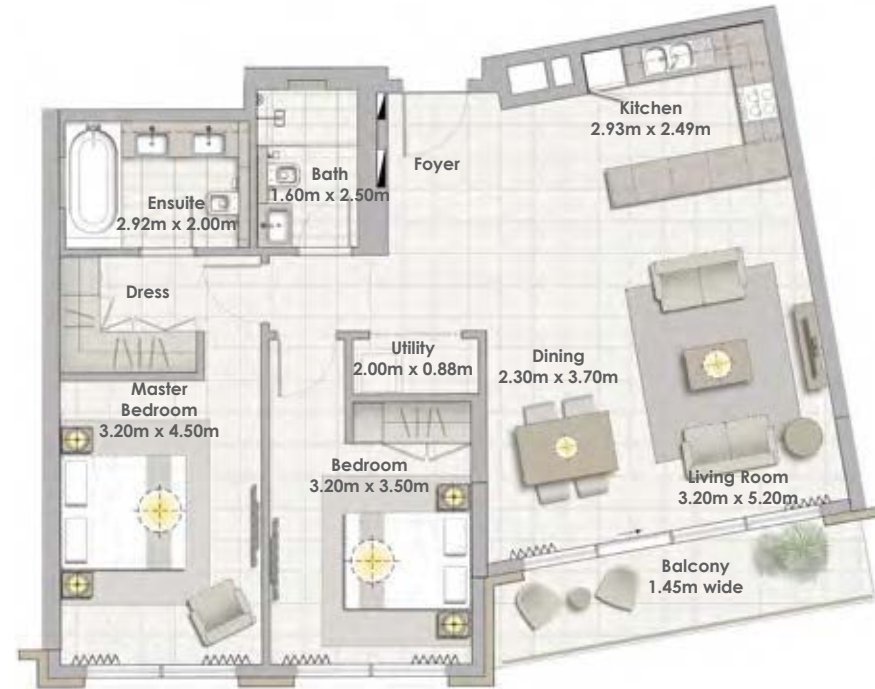
Building 02
2 BEDROOM
UNIT 10/ LEVELS 01-06



Suite Area	103.70 Sqm. / 1116.22 Sqft.
Balcony Area	8.52 Sqm. / 91.71 Sqft.
Total Area	112.22 Sqm. / 1207.93 Sqft.

DUBAI CREEK
HARBOUR
THE COVE

Building 02
2 BEDROOM
UNIT 11/ LEVELS 01-06



Suite Area	103.75 Sqm. / 1116.76 Sqft.
Balcony Area	9.25 Sqm. / 99.57 Sqft.
Total Area	113.00 Sqm. / 1216.32 Sqft.



1. All dimensions are in imperial and metric, and measured to structural elements and exclude wall finishes and construction tolerances. 2. All materials, dimensions, and drawings are approximate only. 3. Information is subject to change without notice, at developer's absolute discretion. 4. Actual area may vary from the stated area. 5. Drawings not to scale. 6. All images used are for illustrative purposes only and do not represent the actual size, features, specifications, fittings, and furnishings. 7. The developer reserves the right to make revisions/alterations, at its absolute discretion, without any liability whatsoever.

Building 02
2 BEDROOM
UNIT 01/ LEVEL 07

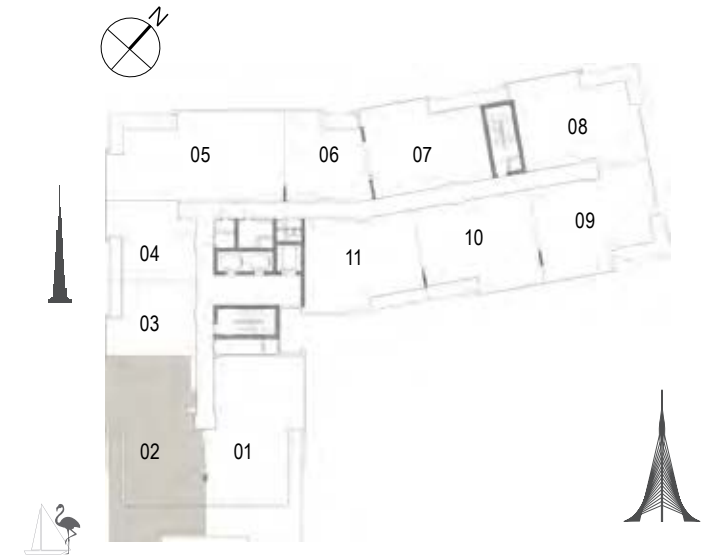


Suite Area	130.17 Sqm. / 1401.14 Sqft.
Terrace Area	50.03 Sqm. / 538.52 Sqft.
Total Area	180.20 Sqm. / 1939.66 Sqft.



DUBAI CREEK
HARBOUR
THE COVE

Building 02
2 BEDROOM
UNIT 02/ LEVEL 07

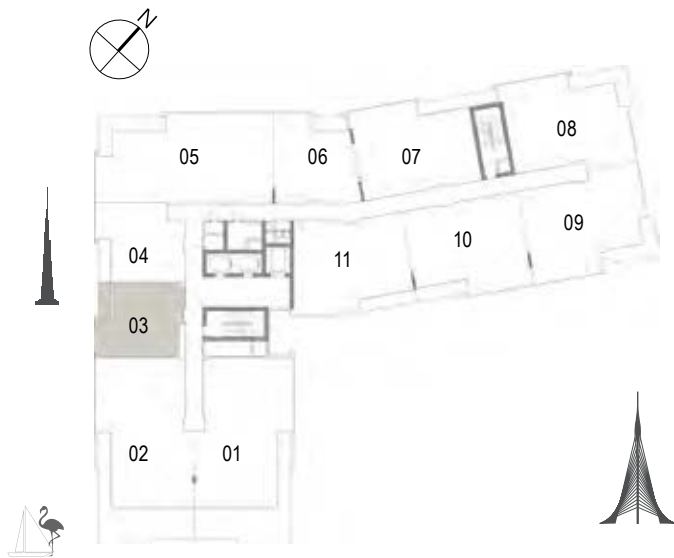


Suite Area	130.27 Sqm. / 1402.21 Sqft.
Terrace Area	50.03 Sqm. / 538.52 Sqft.
Total Area	180.30 Sqm. / 1940.73 Sqft.



1. All dimensions are in imperial and metric, and measured to structural elements and exclude wall finishes and construction tolerances. 2. All materials, dimensions, and drawings are approximate only. 3. Information is subject to change without notice, at developer's absolute discretion. 4. Actual area may vary from the stated area. 5. Drawings not to scale. 6. All images used are for illustrative purposes only and do not represent the actual size, features, specifications, fittings, and furnishings. 7. The developer reserves the right to make revisions/alterations, at its absolute discretion, without any liability whatsoever.

Building 02
1 BEDROOM
UNIT 03/ LEVEL 07



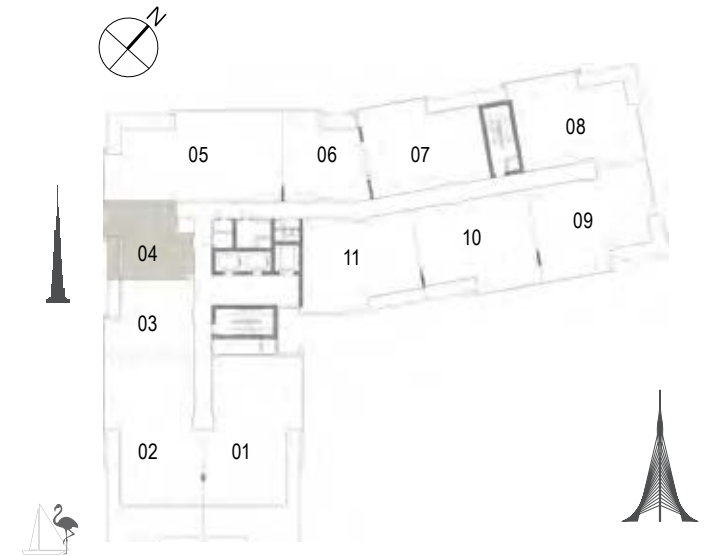
Suite Area	62.16 Sqm. / 669.08 Sqft.
Balcony Area	6.38 Sqm. / 68.67 Sqft.
Total Area	68.54 Sqm. / 737.76 Sqft.

DUBAI CREEK
HARBOUR
THE COVE

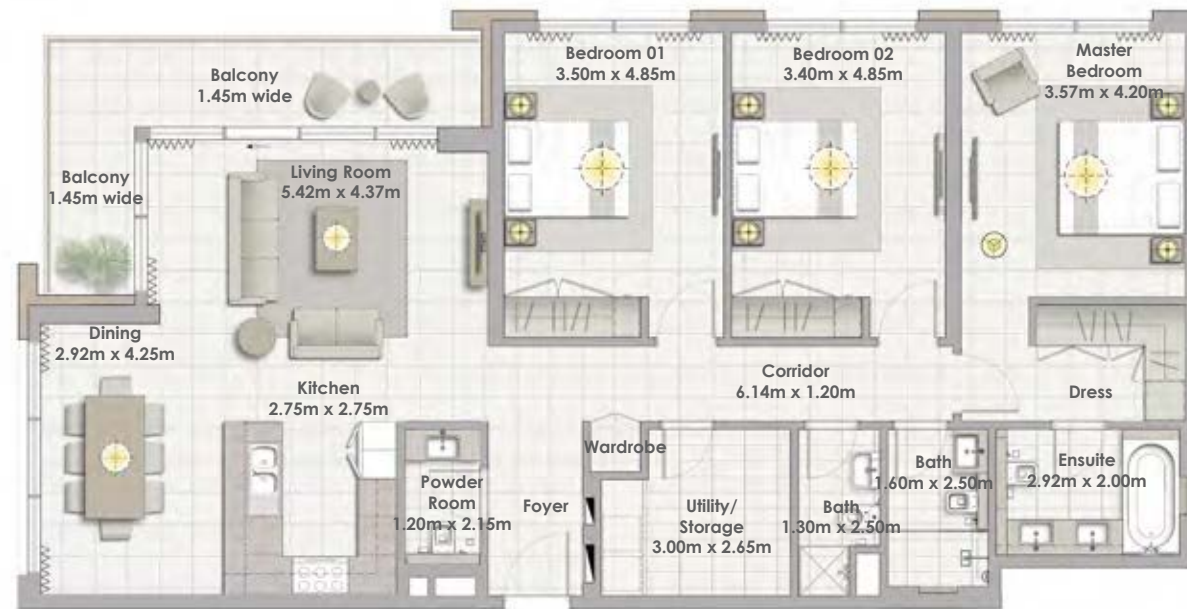
Building 02
1 BEDROOM
UNIT 04/ LEVEL 07



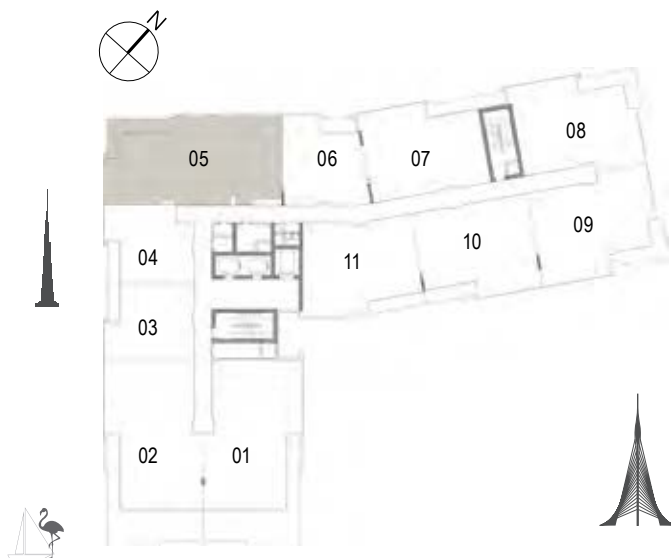
Suite Area	60.44 Sqm. / 650.57 Sqft.
Balcony Area	7.02 Sqm. / 75.56 Sqft.
Total Area	67.46 Sqm. / 726.13 Sqft.



1. All dimensions are in imperial and metric, and measured to structural elements and exclude wall finishes and construction tolerances. 2. All materials, dimensions, and drawings are approximate only. 3. Information is subject to change without notice, at developer's absolute discretion. 4. Actual area may vary from the stated area. 5. Drawings not to scale. 6. All images used are for illustrative purposes only and do not represent the actual size, features, specifications, fittings, and furnishings. 7. The developer reserves the right to make revisions/alterations, at its absolute discretion, without any liability whatsoever.



Building 02
3 BEDROOM
UNIT 05/ LEVEL 07



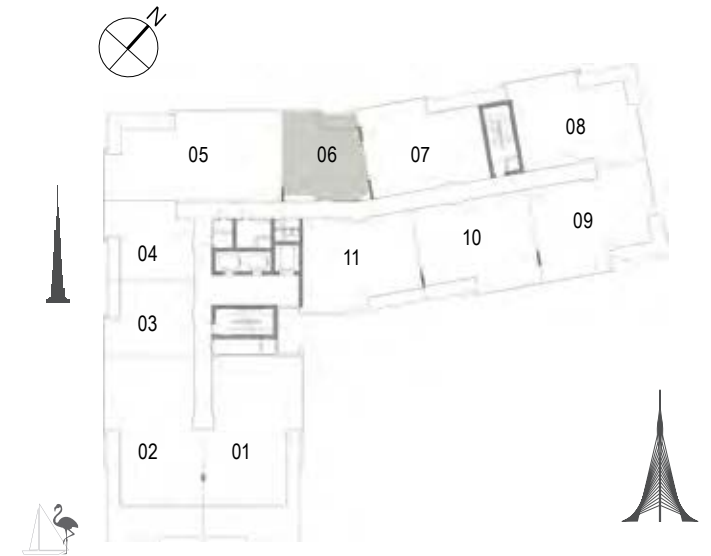
Suite Area	148.24 Sqm. / 1595.64 Sqft.
Balcony Area	14.78 Sqm. / 159.09 Sqft.
Total Area	163.02 Sqm. / 1754.73 Sqft.

DUBAI CREEK
HARBOUR
THE COVE

Building 02
1 BEDROOM
UNIT 06/ LEVEL 07

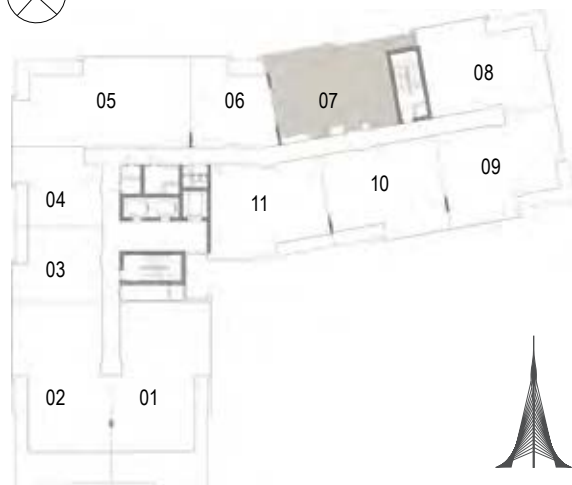


Suite Area	67.15 Sqm. / 722.80 Sqft.
Balcony Area	6.45 Sqm. / 69.43 Sqft.
Total Area	73.60 Sqm. / 792.22 Sqft.



1. All dimensions are in imperial and metric, and measured to structural elements and exclude wall finishes and construction tolerances. 2. All materials, dimensions, and drawings are approximate only. 3. Information is subject to change without notice, at developer's absolute discretion. 4. Actual area may vary from the stated area. 5. Drawings not to scale. 6. All images used are for illustrative purposes only and do not represent the actual size, features, specifications, fittings, and furnishings. 7. The developer reserves the right to make revisions/alterations, at its absolute discretion, without any liability whatsoever.

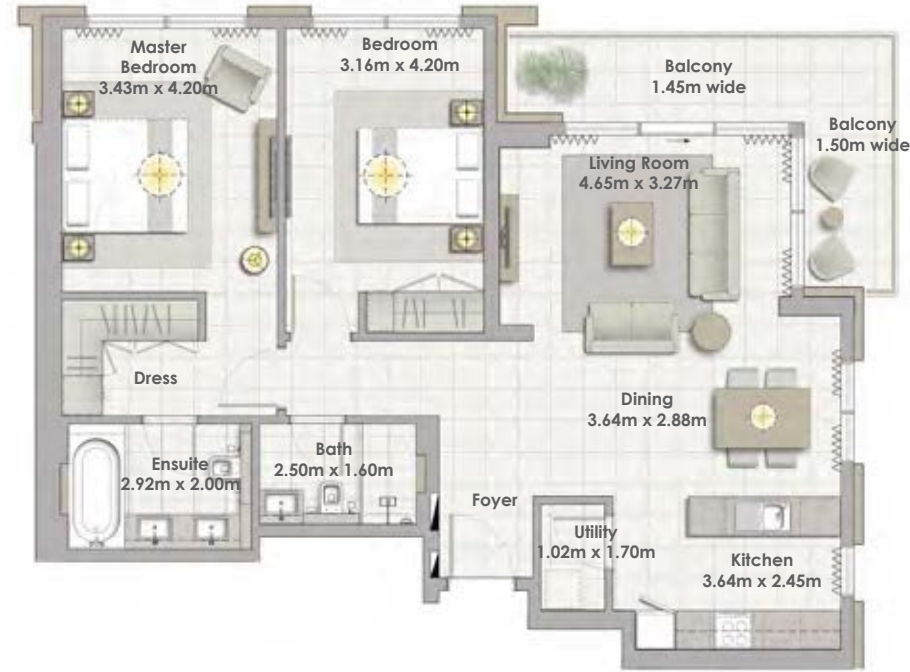
Building 02
2 BEDROOM
UNIT 07/ LEVEL 07



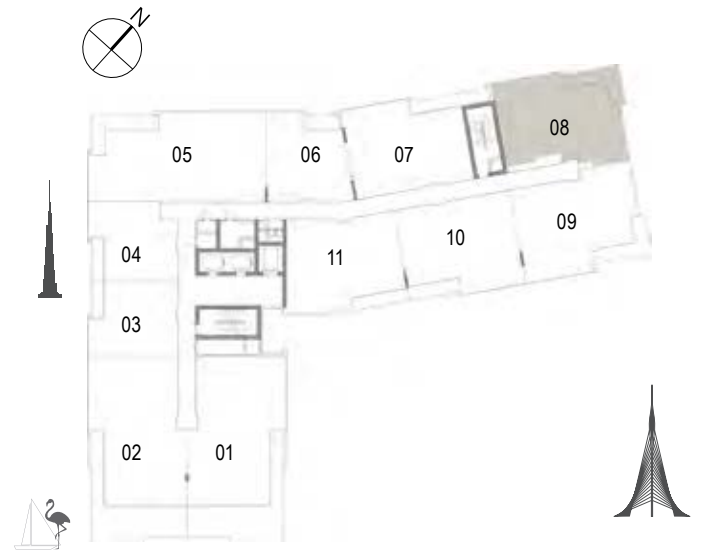
Suite Area	102.58 Sqm. / 1104.16 Sqft.
Balcony Area	13.60 Sqm. / 146.39 Sqft.
Total Area	116.18 Sqm. / 1250.55 Sqft.

DUBAI CREEK
HARBOUR
THE COVE

Building 02
2 BEDROOM
UNIT 08/ LEVEL 07

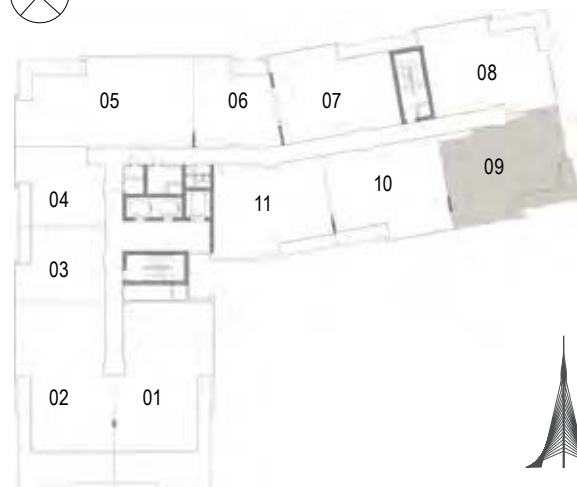


Suite Area	103.43 Sqm. / 1113.31 Sqft.
Balcony Area	13.61 Sqm. / 146.50 Sqft.
Total Area	117.04 Sqm. / 1259.81 Sqft.



1. All dimensions are in imperial and metric, and measured to structural elements and exclude wall finishes and construction tolerances. 2. All materials, dimensions, and drawings are approximate only. 3. Information is subject to change without notice, at developer's absolute discretion. 4. Actual area may vary from the stated area. 5. Drawings not to scale. 6. All images used are for illustrative purposes only and do not represent the actual size, features, specifications, fittings, and furnishings. 7. The developer reserves the right to make revisions/alterations, at its absolute discretion, without any liability whatsoever.

Building 02
2 BEDROOM
UNIT 09/ LEVEL 07



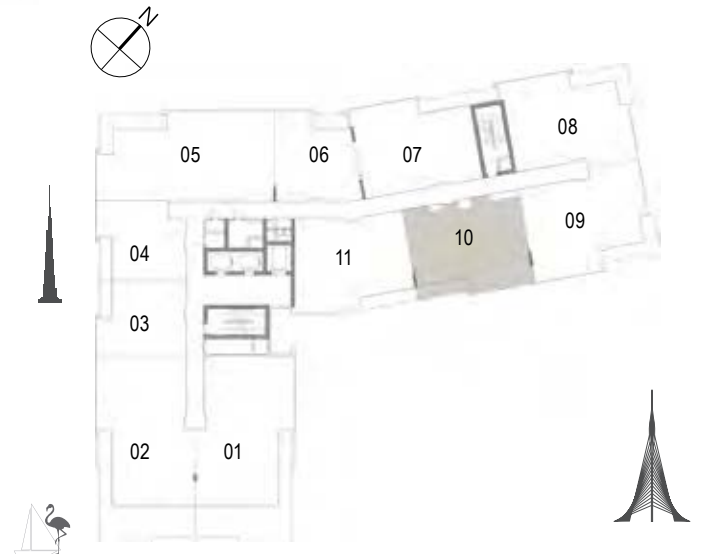
Suite Area	108.25 Sqm. / 1165.19 Sqft.
Balcony Area	13.62 Sqm. / 146.60 Sqft.
Total Area	121.87 Sqm. / 1311.80 Sqft.

DUBAI CREEK
HARBOUR
THE COVE

Building 02
2 BEDROOM
UNIT 10/ LEVEL 07

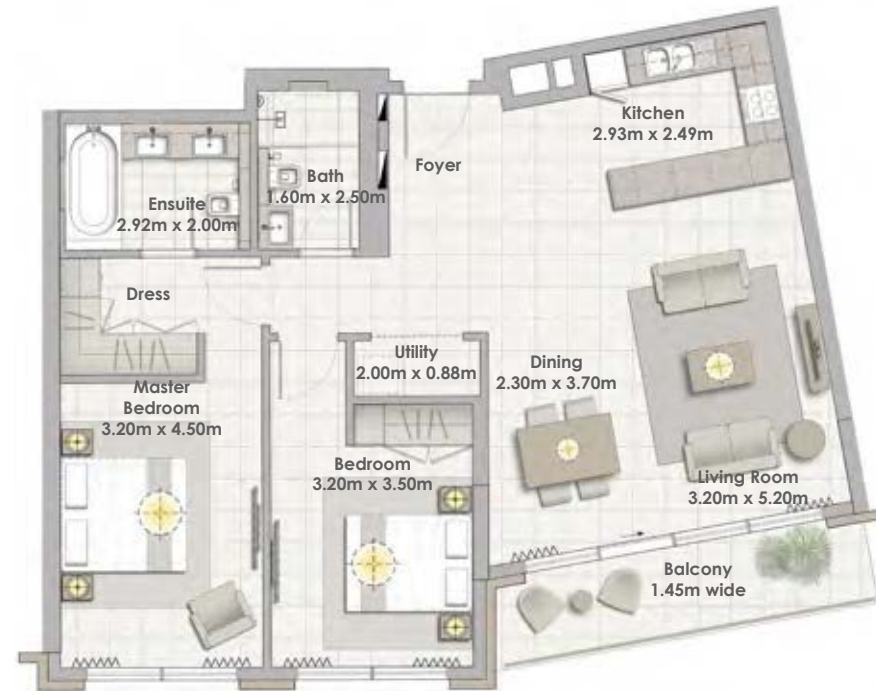


Suite Area	103.70 Sqm. / 1116.22 Sqft.
Balcony Area	8.52 Sqm. / 91.71 Sqft.
Total Area	112.22 Sqm. / 1207.93 Sqft.

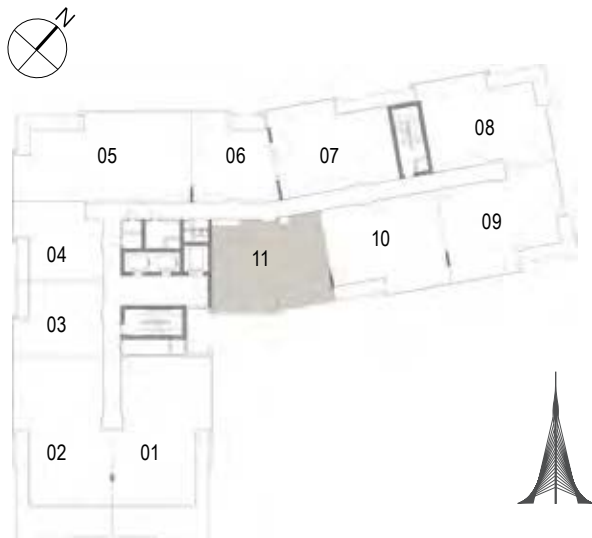


1. All dimensions are in imperial and metric, and measured to structural elements and exclude wall finishes and construction tolerances. 2. All materials, dimensions, and drawings are approximate only. 3. Information is subject to change without notice, at developer's absolute discretion. 4. Actual area may vary from the stated area. 5. Drawings not to scale. 6. All images used are for illustrative purposes only and do not represent the actual size, features, specifications, fittings, and furnishings. 7. The developer reserves the right to make revisions/alterations, at its absolute discretion, without any liability whatsoever.

Building 02
2 BEDROOM
UNIT 11/ LEVEL 07



Suite Area	103.75 Sqm. / 1116.76 Sqft.
Balcony Area	9.25 Sqm. / 99.57 Sqft.
Total Area	113.00 Sqm. / 1216.32 Sqft.

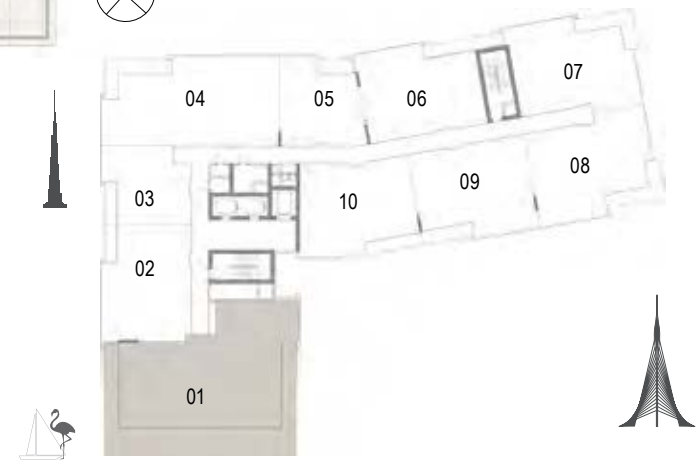


DUBAI CREEK
HARBOUR
THE COVE

Building 02
3 BEDROOM
UNIT 01/ LEVEL 08



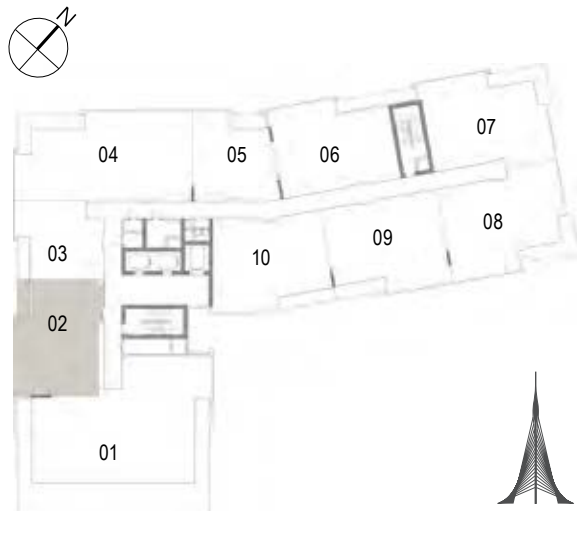
Suite Area	187.23 Sqm. / 2015.33 Sqft.
Terrace Area	84.91 Sqm. / 913.96 Sqft.
Total Area	272.14 Sqm. / 2929.29 Sqft.



1. All dimensions are in imperial and metric, and measured to structural elements and exclude wall finishes and construction tolerances. 2. All materials, dimensions, and drawings are approximate only. 3. Information is subject to change without notice, at developer's absolute discretion. 4. Actual area may vary from the stated area. 5. Drawings not to scale. 6. All images used are for illustrative purposes only and do not represent the actual size, features, specifications, fittings, and furnishings. 7. The developer reserves the right to make revisions/alterations, at its absolute discretion, without any liability whatsoever.

DUBAI CREEK
HARBOUR
THE COVE

Building 02
2 BEDROOM
UNIT 02/ LEVEL 08



Suite Area	98.30 Sqm. / 1058.09 Sqft.
Balcony Area	6.38 Sqm. / 68.67 Sqft.
Total Area	104.68 Sqm. / 1126.77 Sqft.

1. All dimensions are in imperial and metric, and measured to structural elements and exclude wall finishes and construction tolerances. 2. All materials, dimensions, and drawings are approximate only. 3. Information is subject to change without notice, at developer's absolute discretion. 4. Actual area may vary from the stated area. 5. Drawings not to scale. 6. All images used are for illustrative purposes only and do not represent the actual size, features, specifications, fittings, and furnishings. 7. The developer reserves the right to make revisions/alterations, at its absolute discretion, without any liability whatsoever.

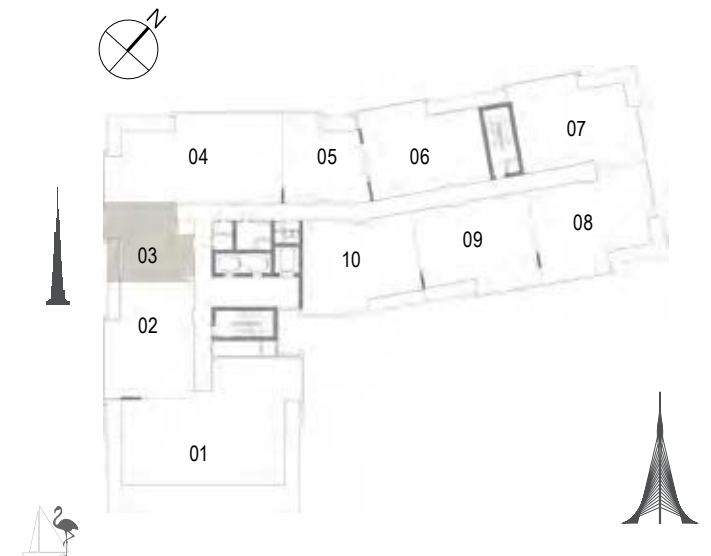


DUBAI CREEK
HARBOUR
THE COVE

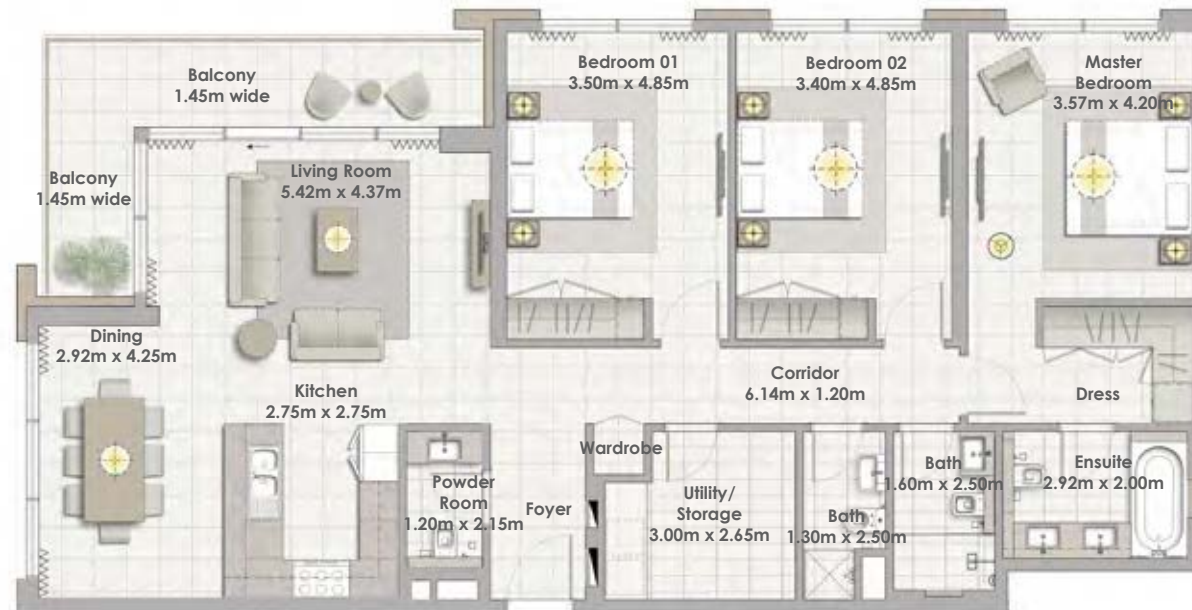
Building 02
1 BEDROOM
UNIT 03/ LEVEL 08



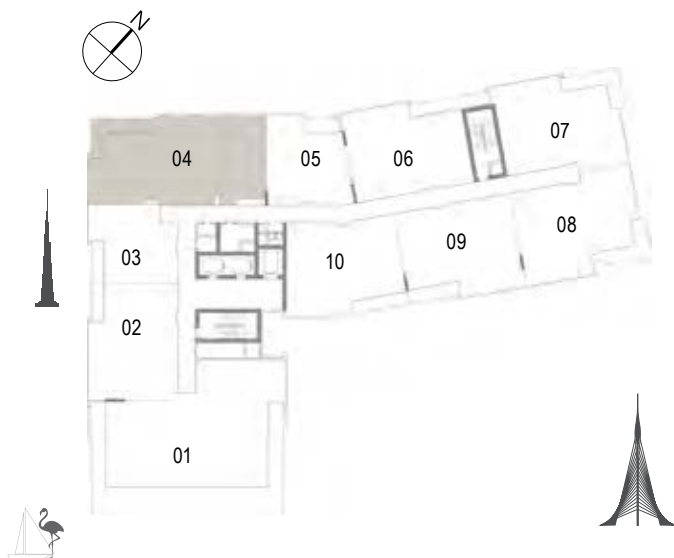
Suite Area	60.44 Sqm. / 650.57 Sqft.
Balcony Area	7.02 Sqm. / 75.56 Sqft.
Total Area	67.46 Sqm. / 726.13 Sqft.



1. All dimensions are in imperial and metric, and measured to structural elements and exclude wall finishes and construction tolerances. 2. All materials, dimensions, and drawings are approximate only. 3. Information is subject to change without notice, at developer's absolute discretion. 4. Actual area may vary from the stated area. 5. Drawings not to scale. 6. All images used are for illustrative purposes only and do not represent the actual size, features, specifications, fittings, and furnishings. 7. The developer reserves the right to make revisions/alterations, at its absolute discretion, without any liability whatsoever.



Building 02
3 BEDROOM
UNIT 04/ LEVEL 08



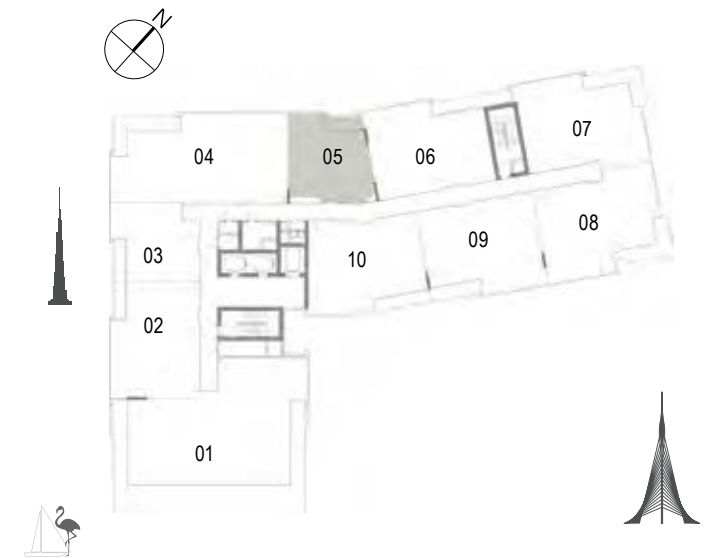
Suite Area	148.24 Sqm. / 1595.64 Sqft.
Balcony Area	14.78 Sqm. / 159.09 Sqft.
Total Area	163.02 Sqm. / 1754.73 Sqft.

DUBAI CREEK
HARBOUR
THE COVE

Building 02
1 BEDROOM
UNIT 05/ LEVEL 08



Suite Area	67.15 Sqm. / 722.80 Sqft.
Balcony Area	6.45 Sqm. / 69.43 Sqft.
Total Area	73.60 Sqm. / 792.22 Sqft.



1. All dimensions are in imperial and metric, and measured to structural elements and exclude wall finishes and construction tolerances. 2. All materials, dimensions, and drawings are approximate only. 3. Information is subject to change without notice, at developer's absolute discretion. 4. Actual area may vary from the stated area. 5. Drawings not to scale. 6. All images used are for illustrative purposes only and do not represent the actual size, features, specifications, fittings, and furnishings. 7. The developer reserves the right to make revisions/alterations, at its absolute discretion, without any liability whatsoever.

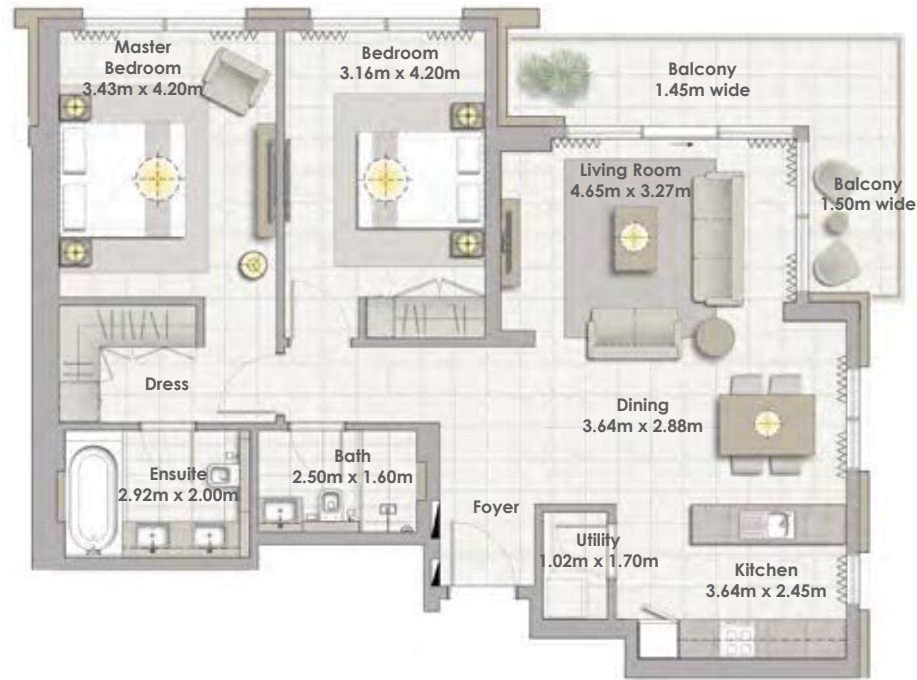
Building 02
2 BEDROOM
UNIT 06/ LEVEL 08



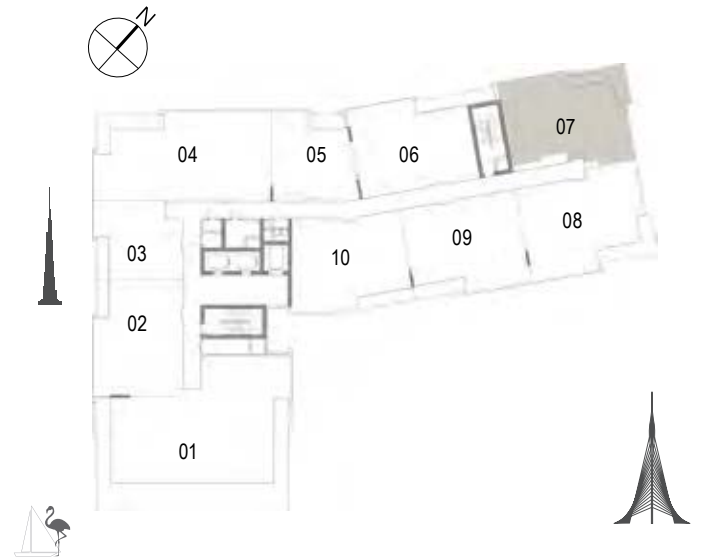
Suite Area	102.58 Sqm. / 1104.16 Sqft.
Balcony Area	13.60 Sqm. / 146.39 Sqft.
Total Area	116.18 Sqm. / 1250.55 Sqft.

DUBAI CREEK
HARBOUR
THE COVE

Building 02
2 BEDROOM
UNIT 07/ LEVEL 08

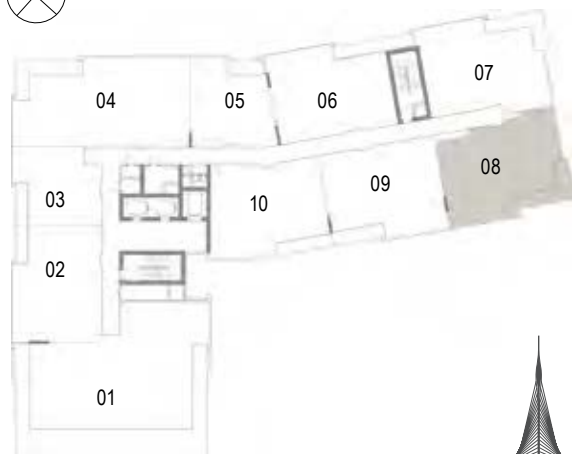


Suite Area	103.43 Sqm. / 1113.31 Sqft.
Balcony Area	13.61 Sqm. / 146.50 Sqft.
Total Area	117.04 Sqm. / 1259.81 Sqft.



1. All dimensions are in imperial and metric, and measured to structural elements and exclude wall finishes and construction tolerances. 2. All materials, dimensions, and drawings are approximate only. 3. Information is subject to change without notice, at developer's absolute discretion. 4. Actual area may vary from the stated area. 5. Drawings not to scale. 6. All images used are for illustrative purposes only and do not represent the actual size, features, specifications, fittings, and furnishings. 7. The developer reserves the right to make revisions/alterations, at its absolute discretion, without any liability whatsoever.

Building 02
2 BEDROOM
UNIT 08/ LEVEL 08



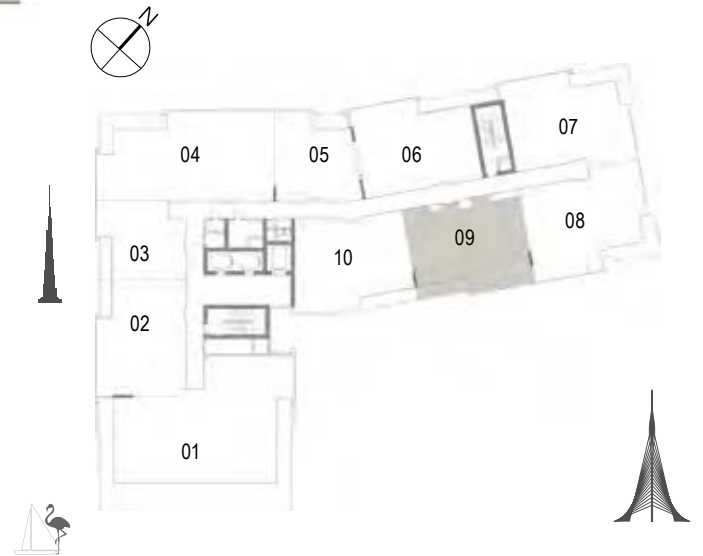
Suite Area	108.25 Sqm. / 1165.19 Sqft.
Balcony Area	13.62 Sqm. / 146.60 Sqft.
Total Area	121.87 Sqm. / 1311.80 Sqft.

DUBAI CREEK
HARBOUR
THE COVE

Building 02
2 BEDROOM
UNIT 09/ LEVEL 08

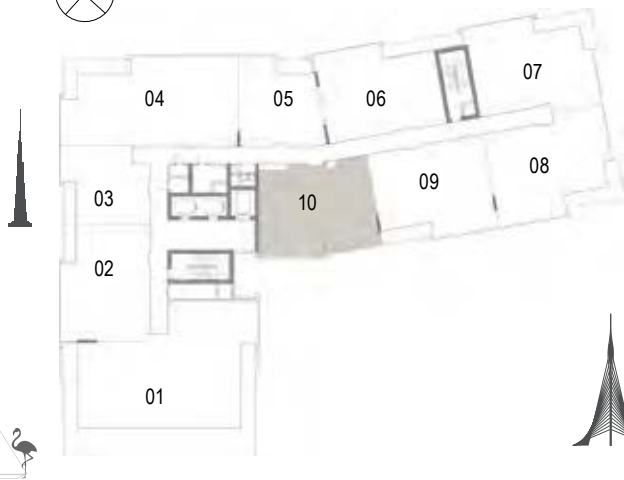
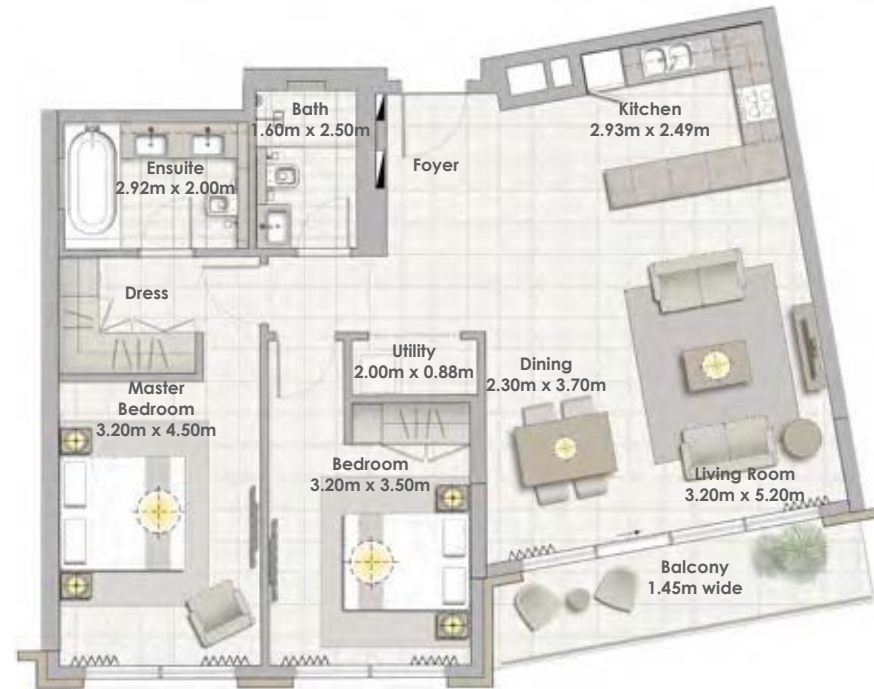


Suite Area	103.70 Sqm. / 1116.22 Sqft.
Balcony Area	8.52 Sqm. / 91.71 Sqft.
Total Area	112.22 Sqm. / 1207.93 Sqft.



1. All dimensions are in imperial and metric, and measured to structural elements and exclude wall finishes and construction tolerances. 2. All materials, dimensions, and drawings are approximate only. 3. Information is subject to change without notice, at developer's absolute discretion. 4. Actual area may vary from the stated area. 5. Drawings not to scale. 6. All images used are for illustrative purposes only and do not represent the actual size, features, specifications, fittings, and furnishings. 7. The developer reserves the right to make revisions/alterations, at its absolute discretion, without any liability whatsoever.

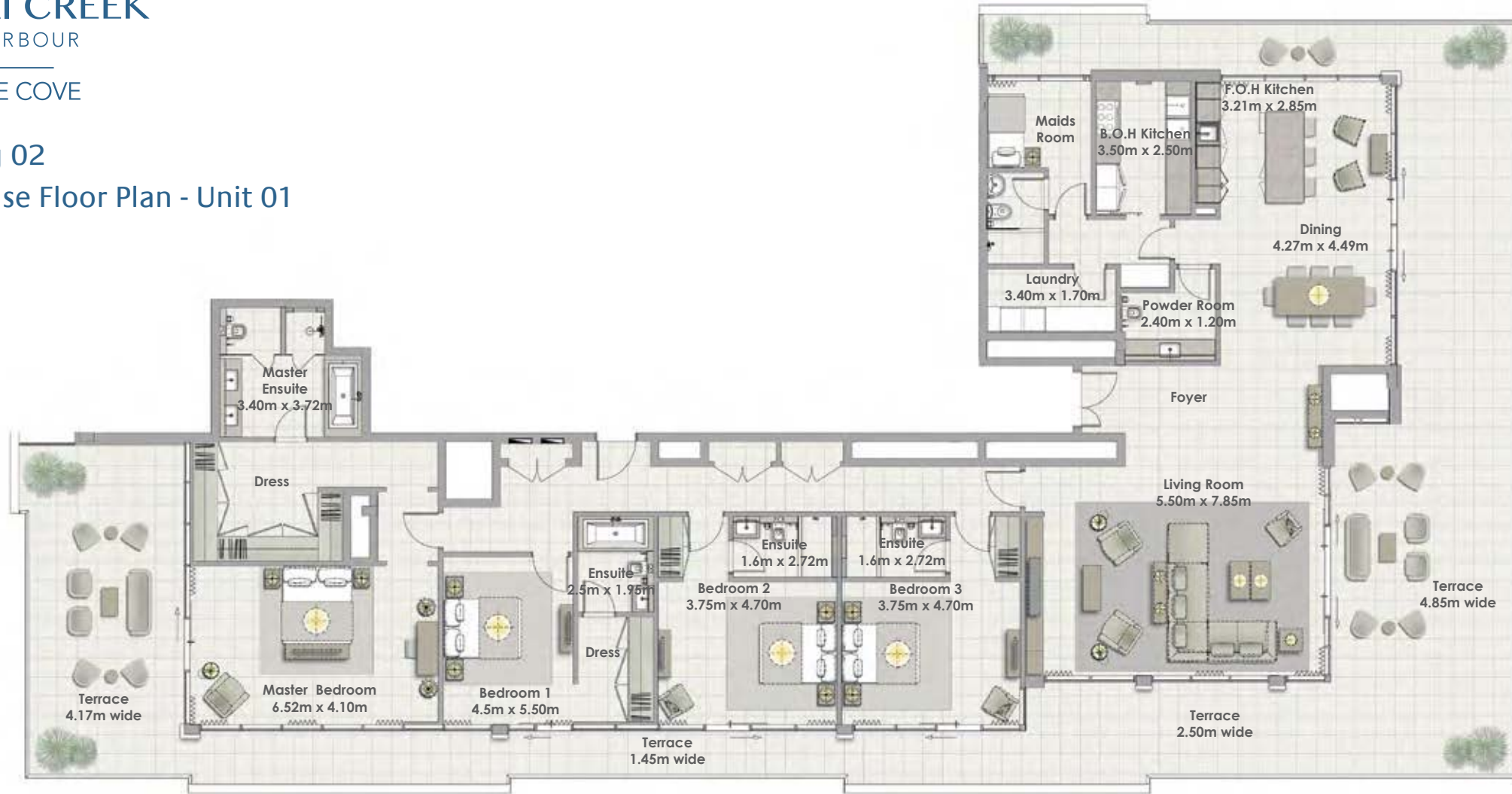
Building 02
2 BEDROOM
UNIT 10/ LEVEL 08



Suite Area	103.75 Sqm. / 1116.76 Sqft.
Balcony Area	9.25 Sqm. / 99.57 Sqft.
Total Area	113.00 Sqm. / 1216.32 Sqft.

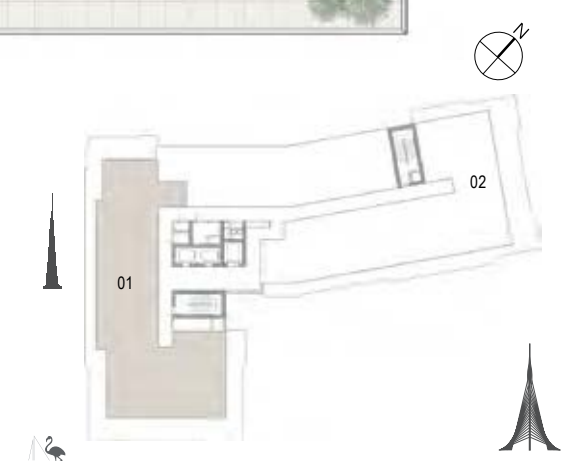
DUBAI CREEK
HARBOUR
THE COVE

Building 02
Penthouse Floor Plan - Unit 01



Building 02
4 BEDROOM
UNIT 01/ LEVELS 09

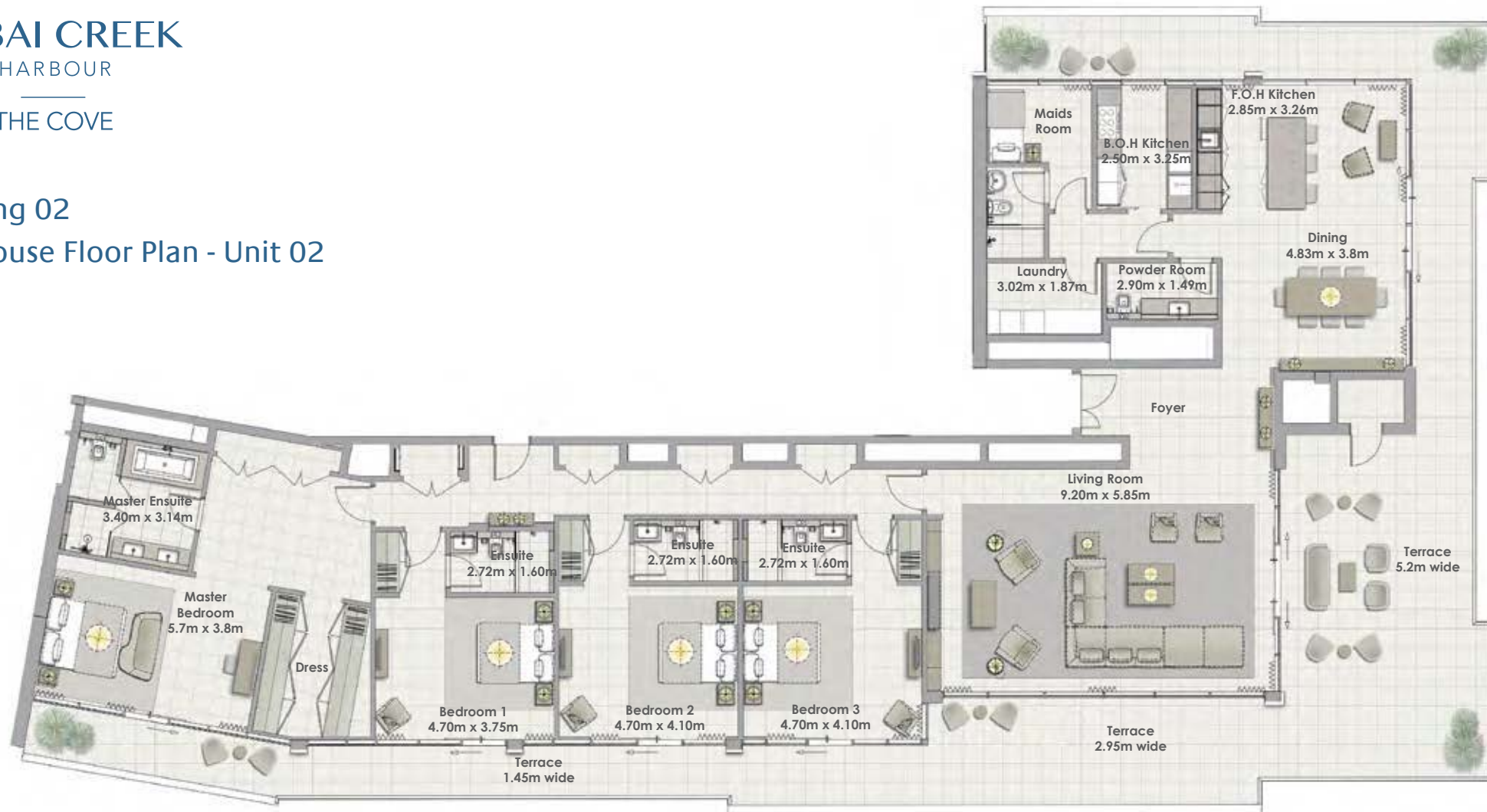
Suite Area	315.38 Sqm. / 3394.72 Sqft.
Balcony Area	186.23 Sqm. / 2004.56 Sqft.
Total Area	501.61 Sqm. / 5399.28 Sqft.



1. All dimensions are in imperial and metric, and measured to structural elements and exclude wall finishes and construction tolerances. 2. All materials, dimensions, and drawings are approximate only. 3. Information is subject to change without notice, at developer's absolute discretion. 4. Actual area may vary from the stated area. 5. Drawings not to scale. 6. All images used are for illustrative purposes only and do not represent the actual size, features, specifications, fittings, and furnishings. 7. The developer reserves the right to make revisions/alterations, at its absolute discretion, without any liability whatsoever.

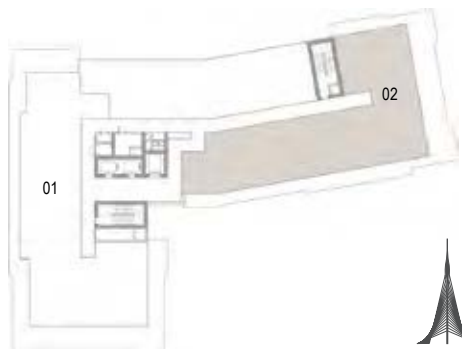
DUBAI CREEK
HARBOUR
THE COVE

Building 02
Penthouse Floor Plan - Unit 02



Building 02
4 BEDROOM
UNIT 02/ LEVELS 09

Suite Area	325.25Sqm. / 3500.96Sqft.
Terrace Area	153.31Sqm. / 1650 Sqft.
Total Area	478.56 Sqm. /5151.18 Sqft.



1. All dimensions are in imperial and metric, and measured to structural elements and exclude wall finishes and construction tolerances. 2. All materials, dimensions, and drawings are approximate only. 3. Information is subject to change without notice, at developer's absolute discretion. 4. Actual area may vary from the stated area. 5. Drawings not to scale. 6. All images used are for illustrative purposes only and do not represent the actual size, features, specifications, fittings, and furnishings. 7. The developer reserves the right to make revisions/alterations, at its absolute discretion, without any liability whatsoever.



DUBAI CREEK

HARBOUR

THE COVE

FOR MORE INFORMATION PLEASE CONTACT



REAL ESTATE

STAY AHEAD, INVEST SMART

 +971 55 476 7630

 +971 4 368 7878

 info@afsrealestate.com

 www.afsrealestate.com



DUBRICKS

POSSIBILITIES ARE LIMITLESS

 +971 50 674 2020

 +971 4 368 7878

 info@dubricks.com

 www.dubricks.com

